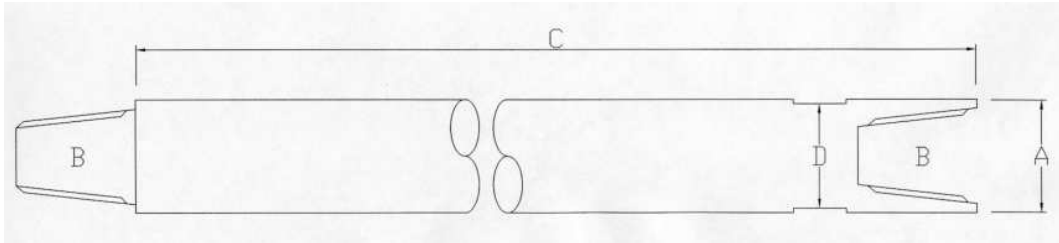


IDS DRILL COLLARS, STABILIZERS & DRILL PIPE

DRILL COLLARS



3 1/2 API IF connections: make up torque 8300 ft lbs
2 7/8 API IF connections: make up torque 6800 ft lbs

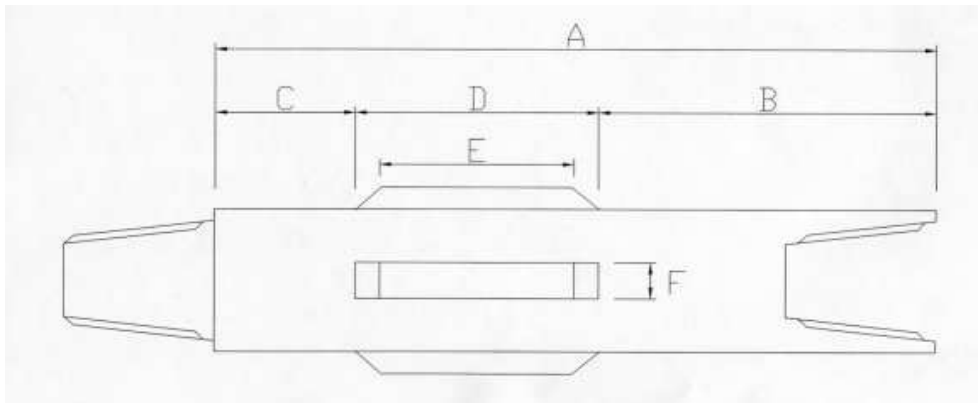
A Diameter		B Connection	C Length		Approx Weight		D Wrench Slots Across Flats
in	mm	in	ft	mm	lb.	kg	in
4 1/2	115	2 7/8 IF	20	6100	680	390	3 7/8
5 1/2	140	3 1/2 IF	10	3050	628	286	4 3/4
5 1/2	140	3 1/2 IF	20	6100	1240	563	4 3/4
8*	203	3 1/2 IF	10	3050	1398	636	4 3/4
8*	203	3 1/2 IF	20	6100	2767	1253	4 3/4

*Neckled down 5 1/2" – Thread forms optional

STABILIZERS WELDED BLADE

3 OR 4 BLADE STRAIGHT

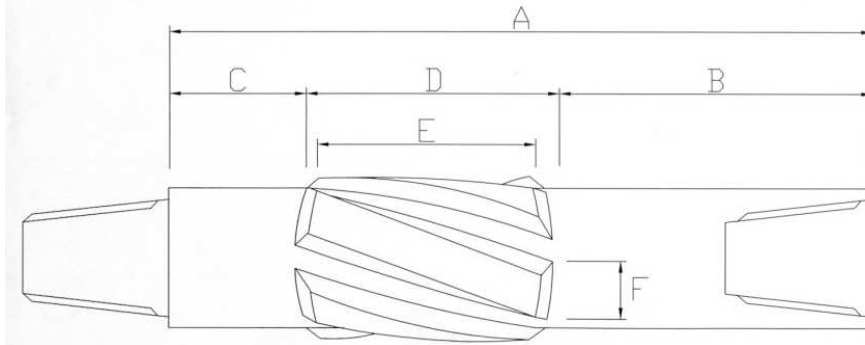
Hole Size in	A Overall Length in	B Fishing Neck in	C Tong Space in	D Blade Layout in	E Crown Length in	F Blade Width in
4 1/8 – 6 3/4	60	28	18	14	12	1 1/2
7 – 9 7/8	61	28	18	15	12	2
10 – 12 1/8	64	28	18	18	12	2
13 – 20	66	28	18	20	14	2
21 – 26	69	28	18	23	17	3



3 BLADE SPIRAL

Hole Size in	A Overall Length in	B Fishing Neck in	C Tong Space in	D Blade Layout in	E Crown Length in	F Blade Width in
4 1/8 – 6 3/4	60	28	18	14	12	1 1/2
7 – 9 7/8	61	28	18	15	12	2
10 – 12 1/8	64	28	18	18	12	2
13 – 20	66	28	18	20	14	2
21 – 26	69	28	18	23	17	3

Body Diameter and Thread to your requirements.
 Drill Collar and Stabilizer Bodies are all produced from
 AISI – 4145 Heat Treated Steel
 Breakout sections machine drilled to your requirements,
 Variations to design optional.



DRILL PIPE

API 5A GRADES 'D' AND 'E' – EXTERNALLY OR INTERNALLY UPSET

Size & Style		Weight Drill Pipe lbs/ft	Pipe Body		Pipe Body		Tool Joint	
Tool Joint	Drill Pipe		OD		OD	ID	Box OD	Pin ID
In	in		in	mm	in	in	in	in

REGULAR STYLE

2 7/8 REG	2 7/8 IU	10.40	2.875	73.0	2.441	1.875	1.875	3.750	1.250
3 1/2 REG	3 1/2 IU	13.30	3.500	88.9	2.764	1.937	1.937	4.120	1.50
4 1/2 REG	4 1/2 IU	16.60	4.500	114.3	3.826	3.156	3.156	5.500	2.250

INTERNAL FLUSH STYLE

2 3/8 IF	2 3/8 EU	6.65	2.375	60.3	1.815	2.656	1.815	3.375	1.750
2 7/8 IF	2 7/8 EU	10.40	2.875	73.0	2.151	3.219	2.151	4.125	2.125
3 1/2 IF	3 1/2 EU	13.30	3.500	88.9	2.764	3.824	2.602	4.750	2.687
3 1/2 IF	3 1/2 EU	15.50	3.500	88.9	2.602	3.824	2.602	5.000	2.687
4 IF	4 EU	14.00	4.000	101.6	3.340	4.500	3.340	5.750	3.250
4 1/2 IF	4 1/2 EU	16.60	4.500	114.3	3.826	5.000	3.826	6.125	3.750
4 1/2 IF	4 1/2 EU	16.60	4.500	114.3	3.826	5.000	3.860	6.250	3.750

FULL HOLE STYLE

3 1/2 FH	3 1/2 IU	13.30	3.500	88.9	2.764	3.500	1.937	4.625	2.437
3 1/2 FH	3 1/2 IU	15.50	3.500	88.9	2.602	3.500	1.937	4.625	2.437
4 FH	4 IU	14.00	4.000	101.6	3.340	4.000	2.750	5.250	2.812
4 1/2 FH	4 1/2 IU	16.60	4.500	114.3	3.826	4.500	3.156	5.750	3.000

'IU' = INTERNAL UPSET 'EU' = EXTERNAL UPSET

EQUIVALENT REFERENCES

2 3/8 = IF = NC 26 3 1/2 = NC 38

2 7/8 IF = NC 31 4 1/2 IF = NC 50

2 7/8 = NC 31 4 1/2 IF = NC 50

NC = NUMBER STYLE CONNECTION

DRILL PIPE
EXTERNALLY FLUSH' – ROTARY DRILLPIPE – API CONNECTION

A Diameter		Wall Thickness		B Length		C Connection API REG	Weight		D Size Across Flats
in	mm	in	mm	ft	mm	in	Lbs	kg	in
3 1/2	90	0.368	9.3	10	3050	2 7/8	147	67	2 3/4
3 1/2	90	0.368	9.3	20	6250	2 7/8	270	123	2 3/4
3 1/2	90	0.368	9.3	25	7620	2 7/8	332	150	2 3/4
4 1/2	114	0.337	8.6	10	3050	3 1/2	190	86	3 7/8
4 1/2	114	0.337	8.6	20	6250	3 1/2	348	157	3 7/8
4 1/2	114	0.337	8.6	25	7620	3 1/2	416	189	3 7/8
4 1/2	114	0.647	17.1	25	7620	3 1/2	729	330	3 7/8
4 1/2	114	0.647	17.1	30	9140	3 1/2	766	394	3 7/8
5	127	0.478	12.1	10	3050	3 1/2	260	118	3 7/8
5	127	0.478	12.1	20	6250	3 1/2	536	243	3 7/8
5	127	0.478	12.1	25	7620	3 1/2	644	292	3 7/8
5	127	0.478	12.1	30	9140	3 1/2	763	346	3 7/8
5 1/2	140	0.415	10.5	10	3050	3 1/2	254	115	4 3/4
5 1/2	140	0.415	10.5	20	6250	3 1/2	521	236	4 3/4
5 1/2	140	0.415	10.5	25	7620	3 1/2	623	283	4 3/4
5 1/2	140	0.415	10.5	30	9140	3 1/2	733	333	4 3/4

ALTERNATIVE DIAMETERS, THREAD FORMS, WALL THICKNESS, LENGTH ETC., AVAILABLE UPON REQUEST.
 FRICTION WELDED, SHRINK FIT AND WELD OR SCREWED JOINTS AVAILABLE.

